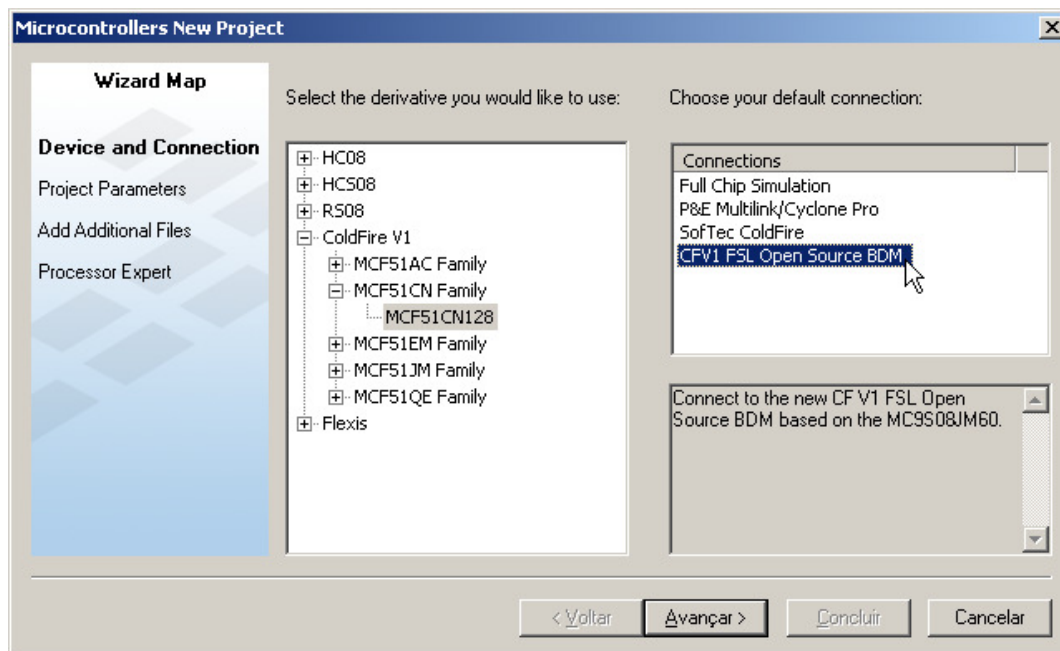
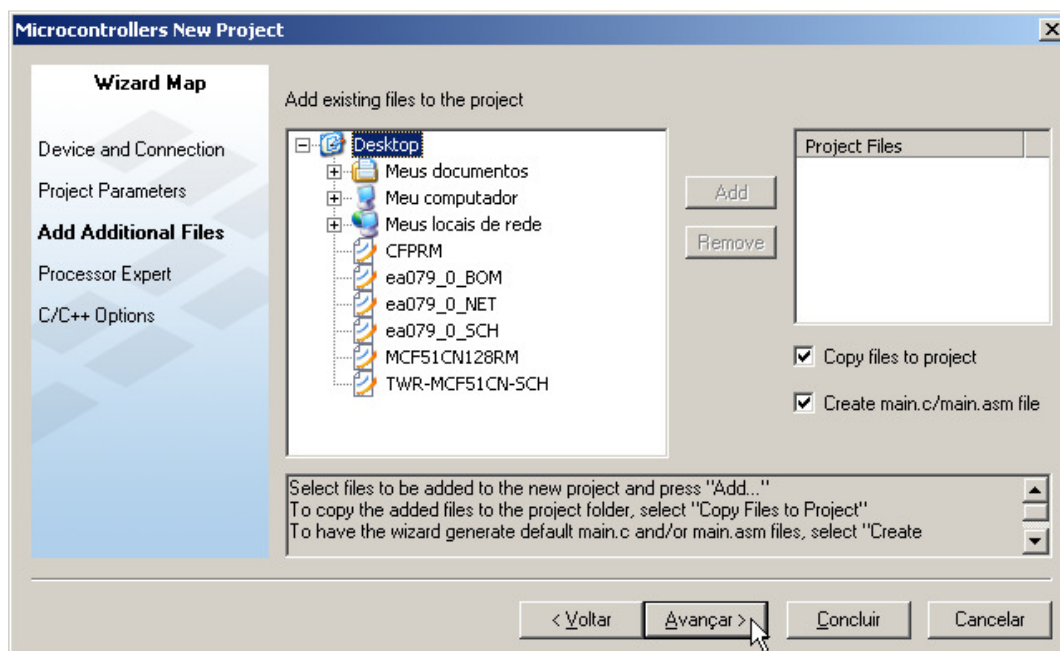
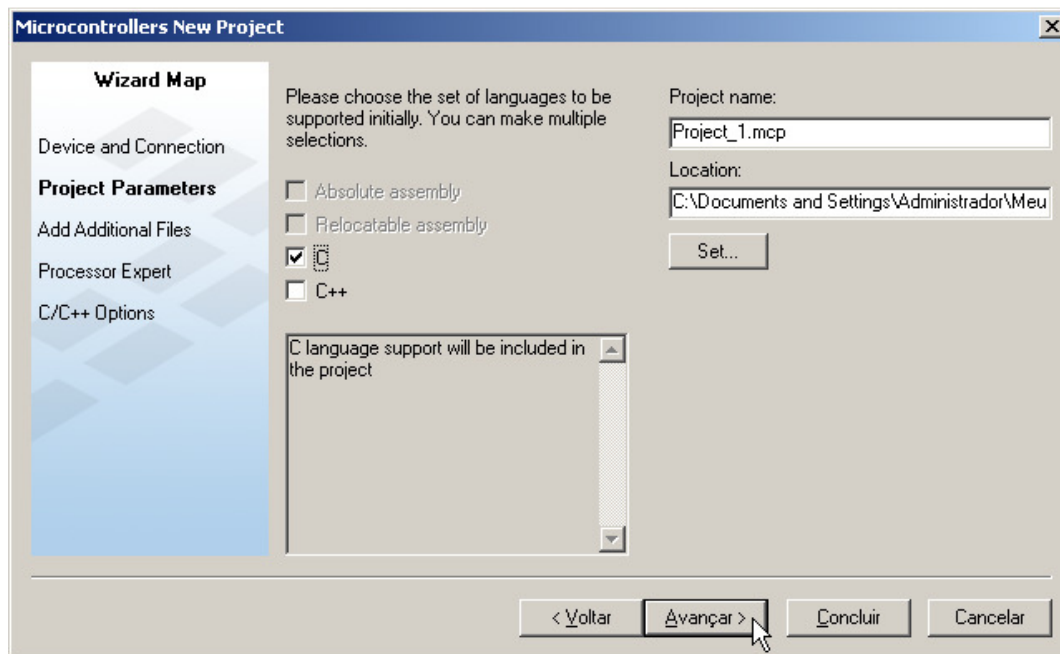
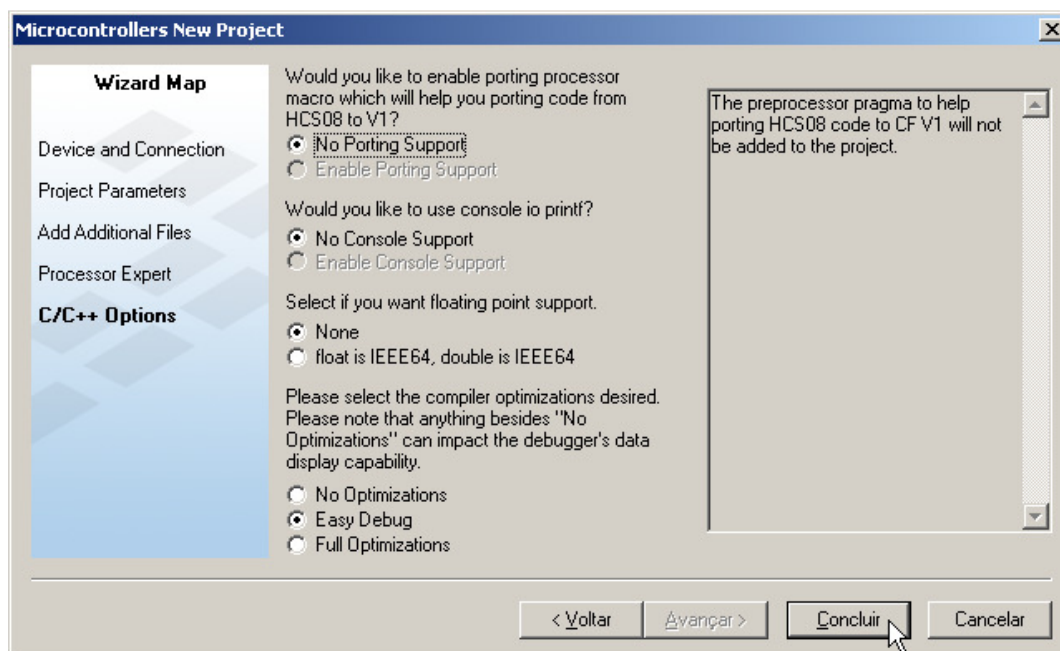
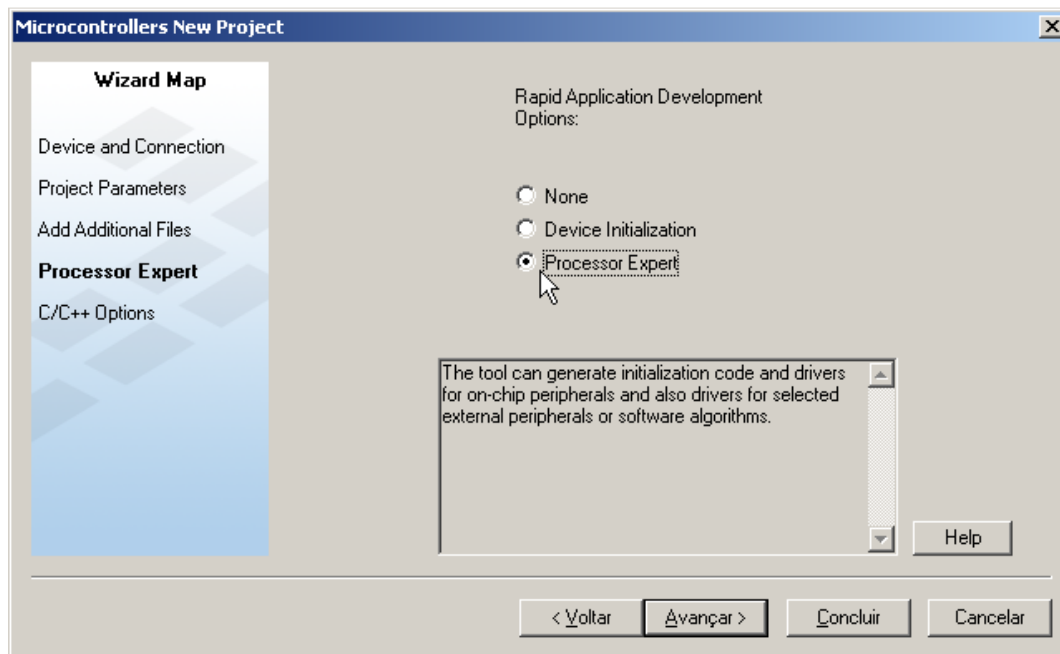
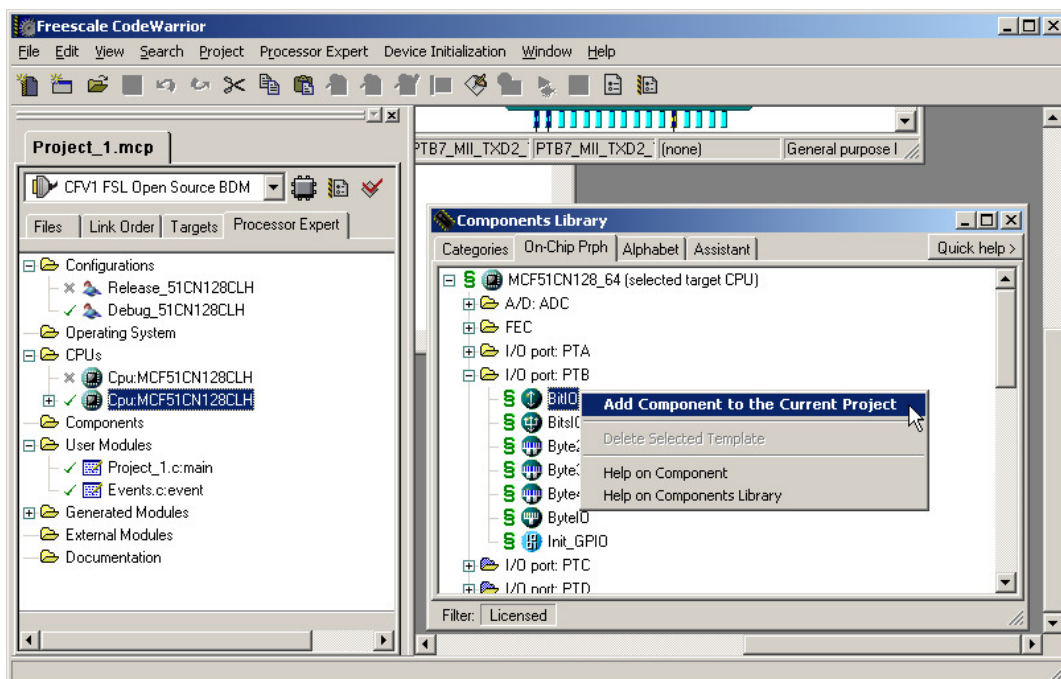
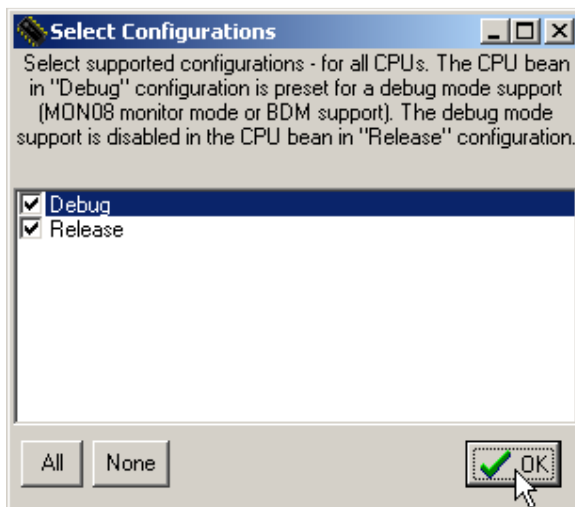
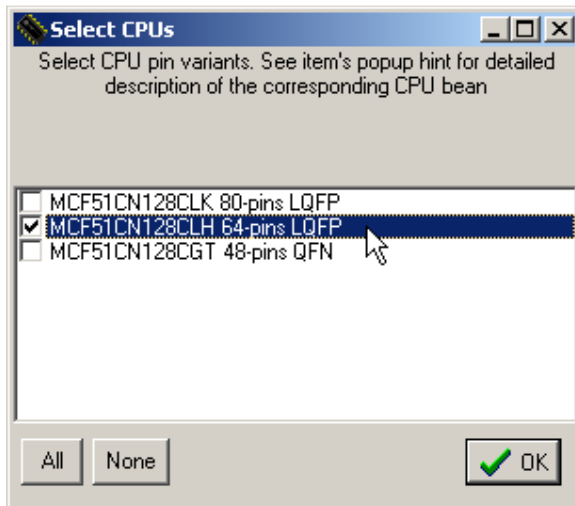


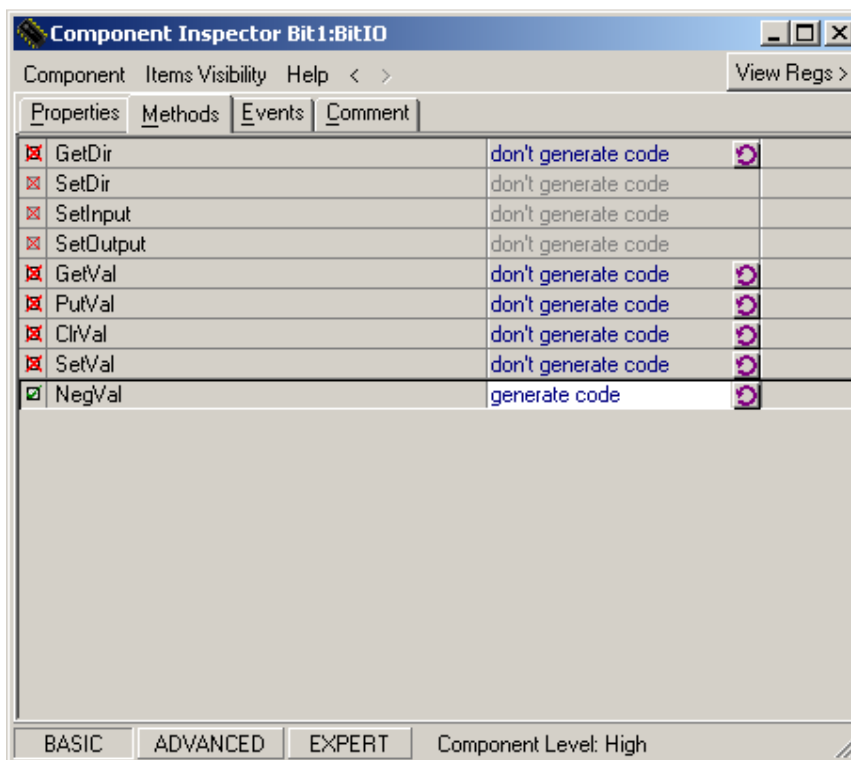
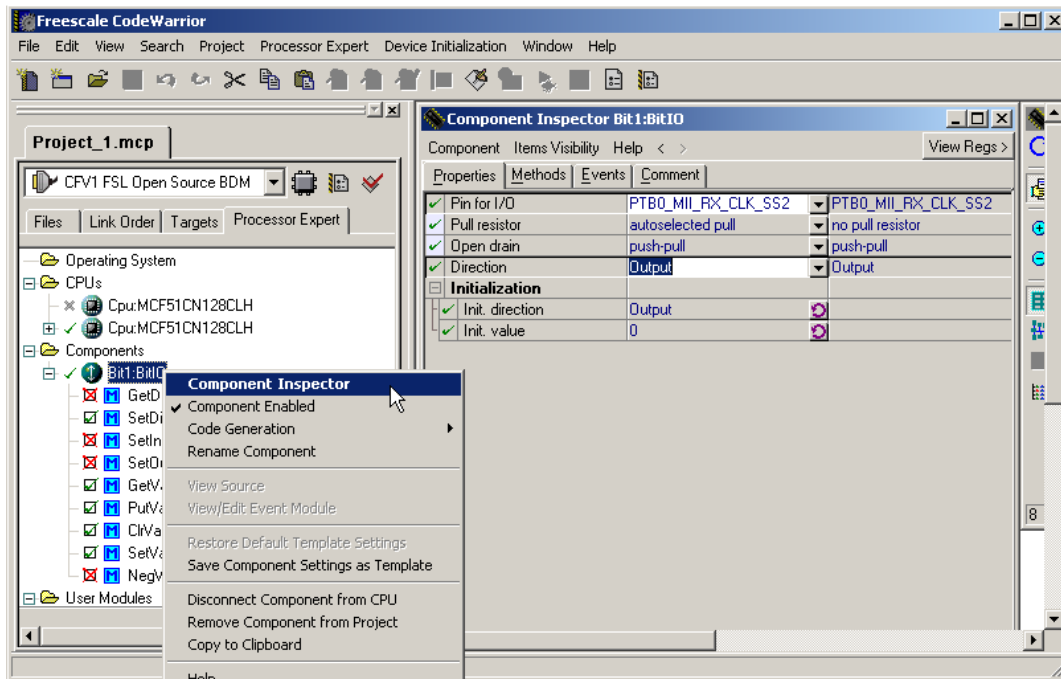
## Guia para fazer o projeto do pisca-LED no Processor Expert

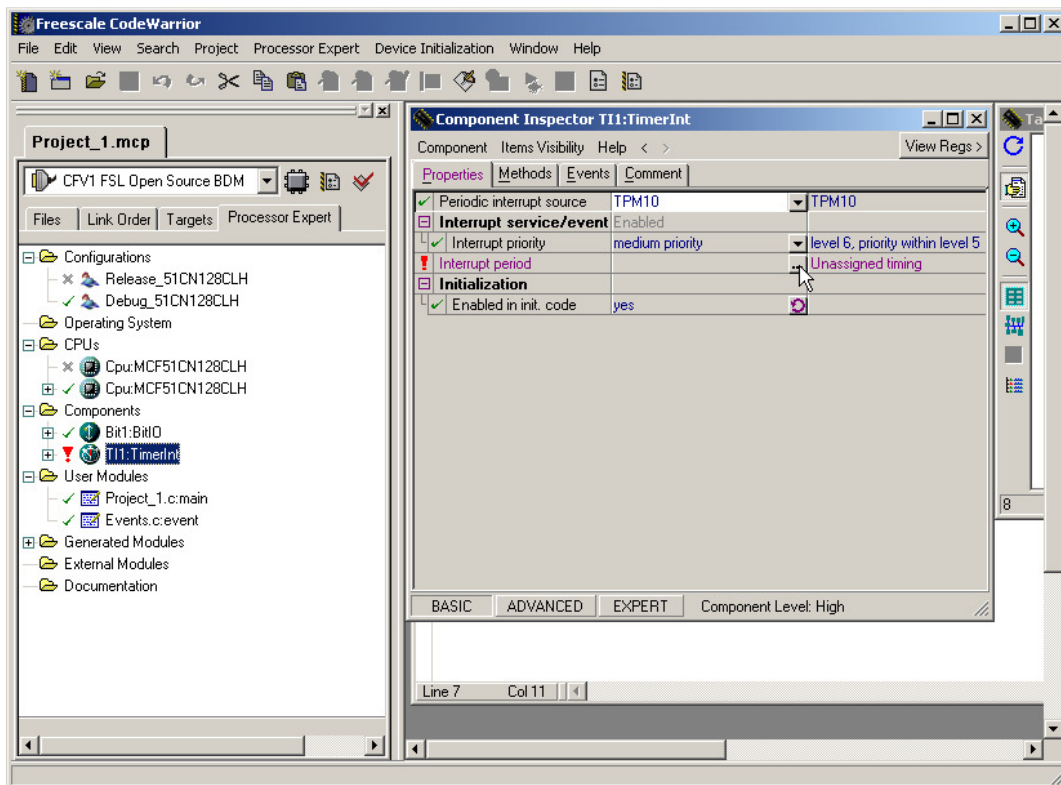
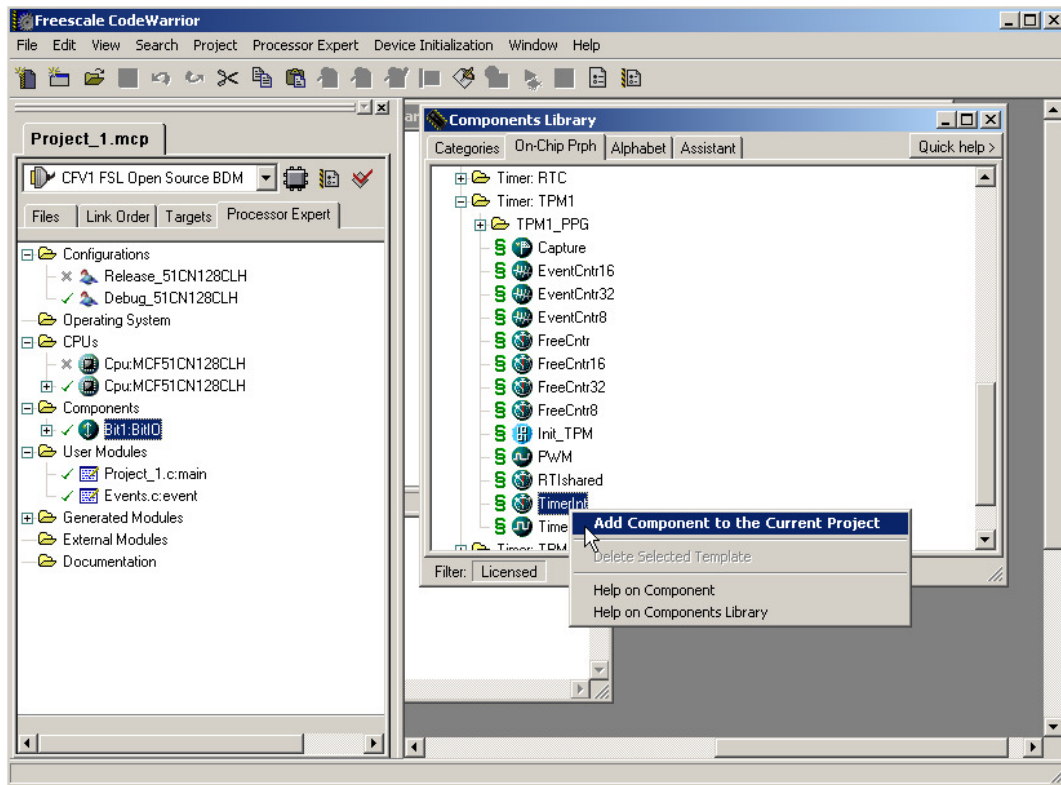












**Timing - Interrupt period**

Runtime setting is not supported in BASIC mode. For enabling runtime setting, switch the Inspector into Advanced or Expert mode (under menu View)

Value type	Value	Unit
Init. value:	500	ms

☐ Recalculate value on unit change

Error allowed:  Unit:

Adjusted settings of the initialization value:

Adjusted value	Error
499.99237 ms	0.00153%

Possible settings

From	Till	Step
0.477µs	15.625ms	0.238µs
15.625ms	31.250ms	0.477µs
31.250ms	62.499ms	0.954µs
62.500ms	124.998ms	1.907µs
125ms	249.996ms	3.815µs
250ms	499.992ms	7.629µs
500ms	999.985ms	15.259µs
1000ms	1999.969ms	30.518µs
2000ms	3999.939ms	61.035µs
4000ms	7999.878ms	122.070µs
8000ms	16.000sec	244.141µs
16sec	32.000sec	488.281µs
32sec	63.999sec	976.562µs
64sec	127.998sec	1953.125µs
128sec	255.996sec	3906.250µs
256sec	511.992sec	7812.500µs

OK Cancel Help

**Freescalar CodeWarrior**

File Edit View Search Project Processor Expert Device Initialization Window Help

Project\_1.mcp

CFV1 FSL Open Source BDM

Files Link Order Targets Processor Expert

- Configurations
  - Release\_51CN128CLH
  - Debug\_51CN128CLH
- Operating System
- CPUs
  - Cpu:MCF51CN128CLH
  - Cpu:MCF51CN128CLH
- Components
  - Bit1:BitIO
  - T11:TimerInt
- User Modules
  - Project\_1.c:main
  - Events.c:event
- Generated Modules
- External Modules
- Documentation

3 files 0

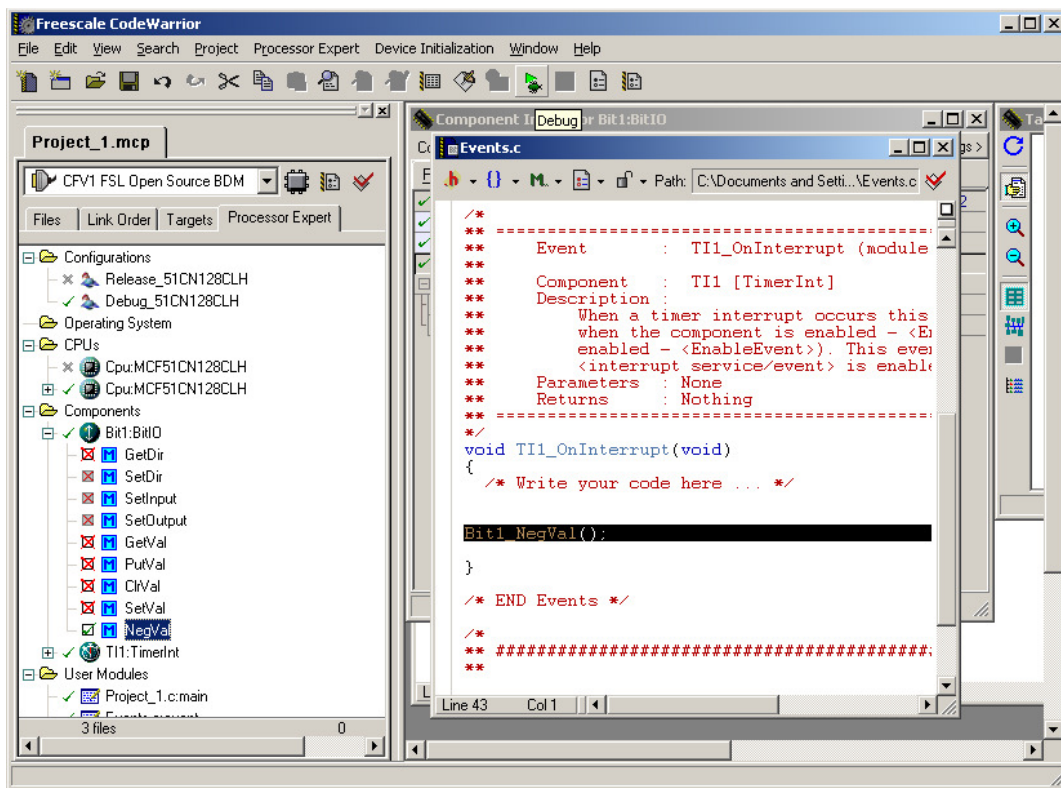
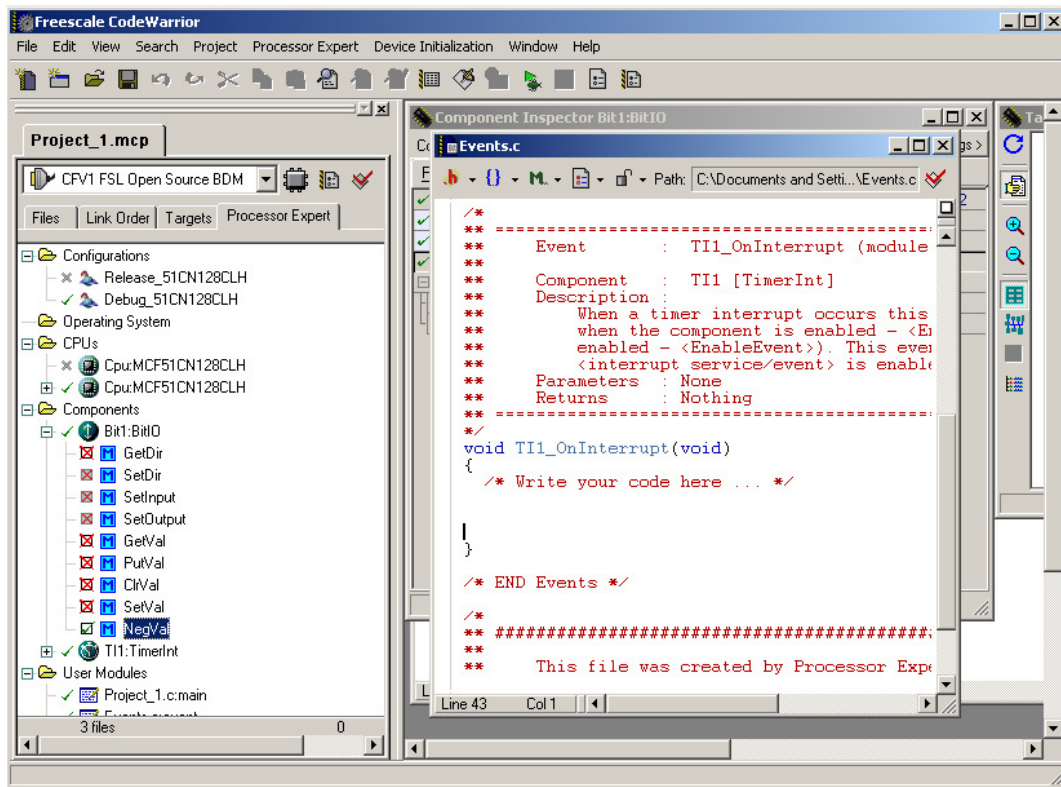
User Makefile Inspector - Events.c:event

Component Items Visibility Help < > View Regs >

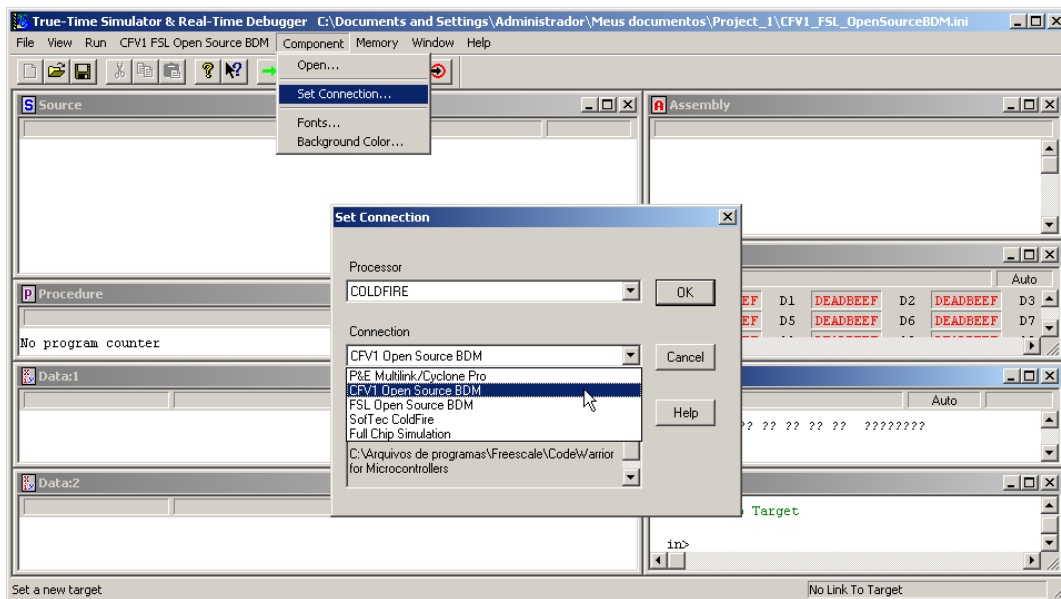
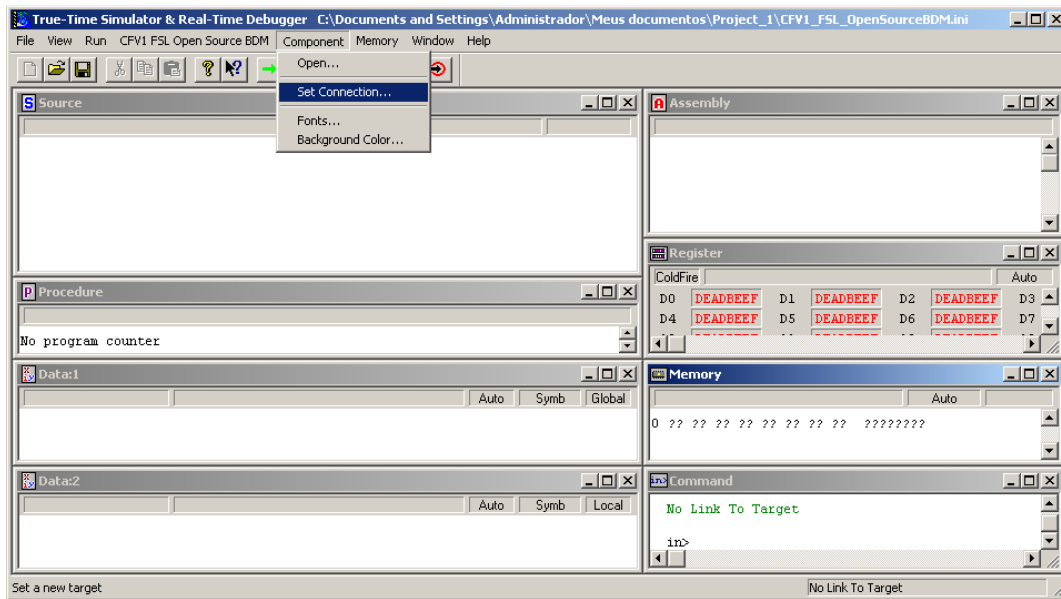
BASIC ADVANCED EXPERT

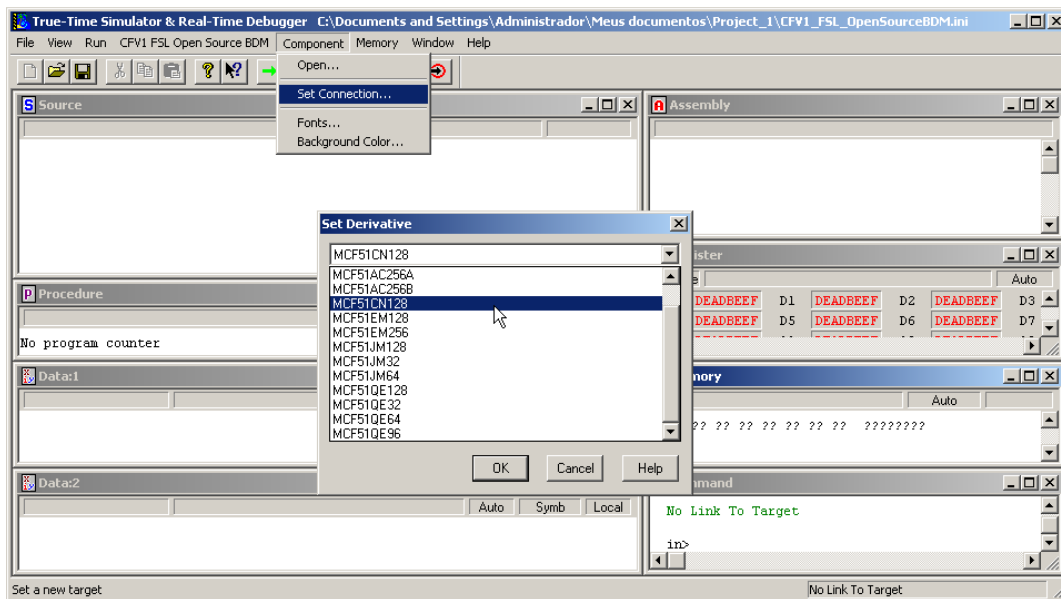
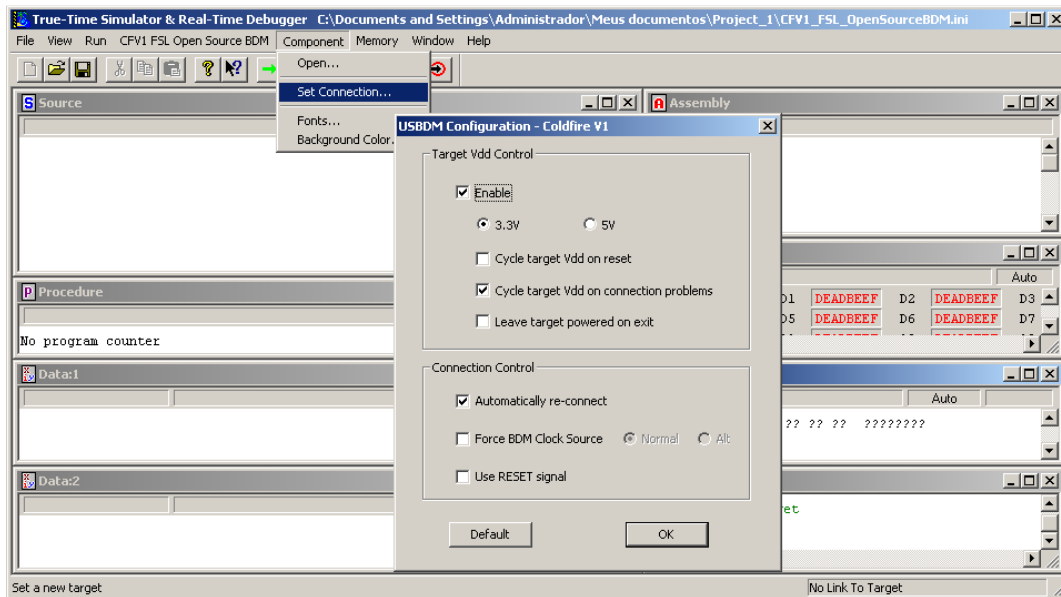
Line 7 Col 11











Com as placas da Placa de Desenvolvimento e a Placa do BDM ligadas,  
MAKE, DEBUG, RUN.